

FOOD FOREST'S FUTURE ROLE

Feeding the world

Wouter van Eck – Food Forest Ketelbroek
International Forest Garden / Food Forest Symposium 2021
Agroforestry Research Trust



Ground Zero – Food Forest Ketelbroek 2009
Cool temperate climate (USDA hardiness zone 7a)
2.5 hectares (6 acres)
Groesbeek, the Netherlands



Food Forest Ketelbroek 2016





Part of September harvest from Food Forest Ketelbroek



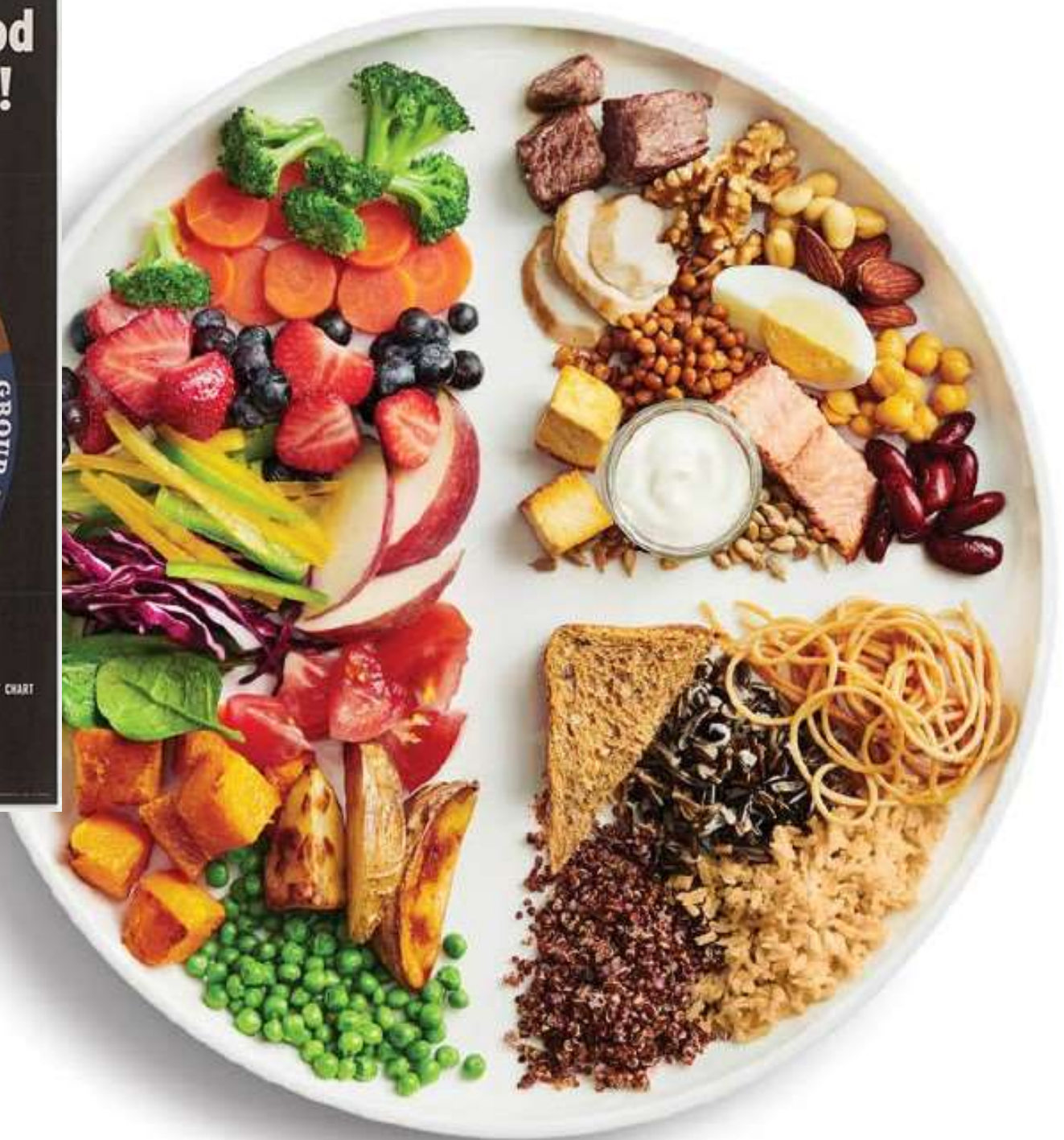
Food Forests can attract many visitors, enjoying lush growing plants. Quite often this question pops up: *“Can you feed the world this way?”*

*For Health...eat some food
from each group...every day!*



*IN ADDITION TO THE BASIC 7...
EAT ANY OTHER FOODS YOU WANT*

U. S. DEPARTMENT OF AGRICULTURE



Canada's Dietary Guidelines



Enjoy your meal! Harvest from Food Forest Ketelbroek – October

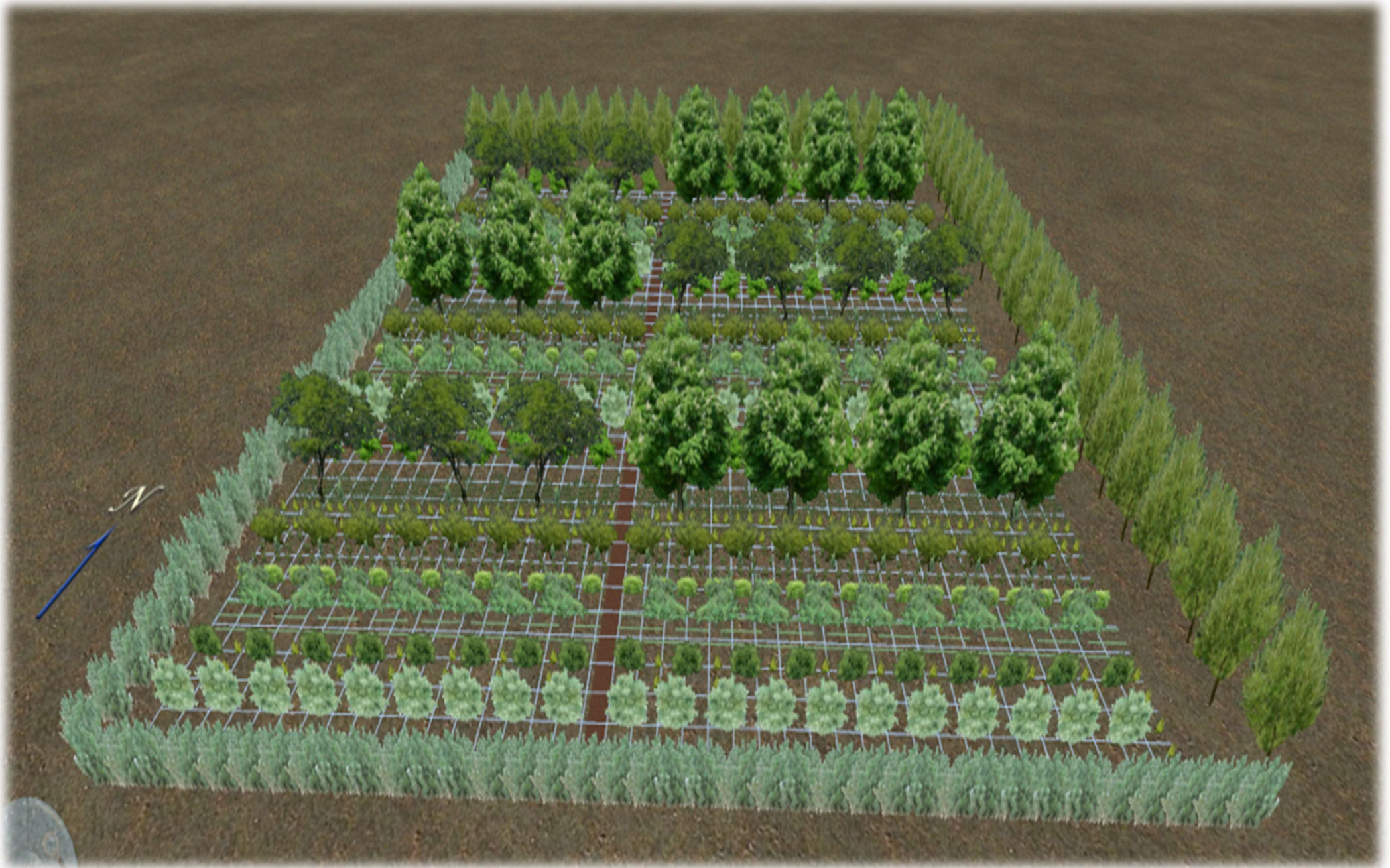


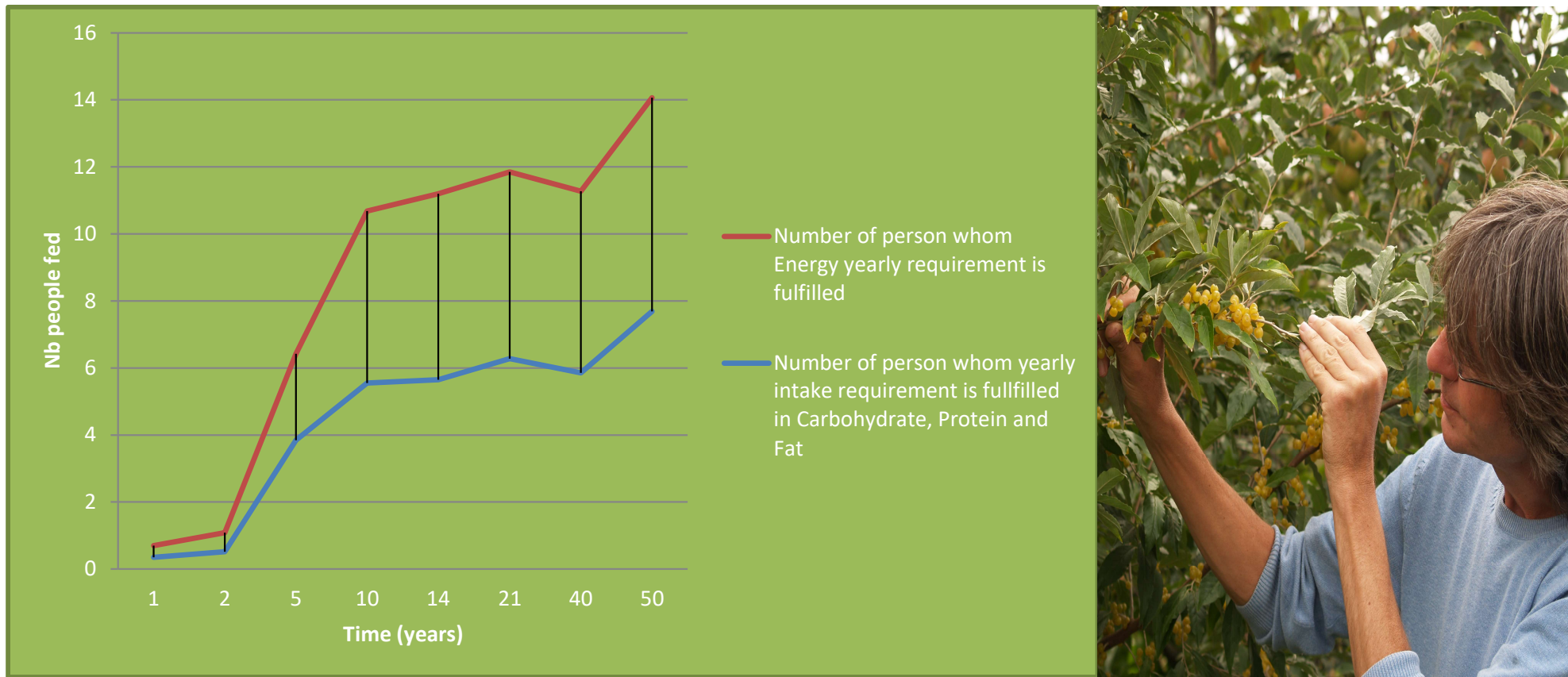
The way we produce
our food matters;
dietary choices can help
reduce emissions and
pressure on land.

Climate Change and Land: an IPCC special report on climate change, desertification, land degradation, sustainable land management, food security, and greenhouse gas fluxes in terrestrial ecosystems. August 2019

Boulestreau, Yann (Co-author Wouter van Eck).

Design and Performance evaluation of 1ha theoretical productive food forest
Farming Systems Ecology, Wageningen University & Research, 2017





Actinidia arguta; Allium ursinum; Aronia melanocarpa; Castanea sativa; Corylus avellana; Eleaagnus umbellata; Hemerocallis spp.; Hippophaë rhamnoides; Juglans regia; Malus domestica; Prunus domestica; Prunus dulcis; Rheum spp.; Ribes rubrum; Rubus idaeus; Sambucus spp




Voedselbos Schijndel

Sketch Schijndel Food Forest

20 hectares (49.5 acres), lease agreement between Stichting Voedselbosbouw and Province of Brabant, the Netherlands

H1 11.000m²

Hardekamp-Schijndel

Soorten en eerste telling

Kroonsoorten

1. Zwarte els (vulsoort) ca. 60
- 1a. Zwarte els (drager kiwibes, groter) 15
2. Veldesdoorn (vulsoort, drager) 7
3. Witte walnoot met vulsoort 28

Tussensoort

5. kweepeer 50
6. amandelen 30
7. abrikozen 20

Struiken

8. Hazelaar 65
9. Pimpernoot 13
10. Duindoorn 42
11. Olijfwilg 33

Lage struiken

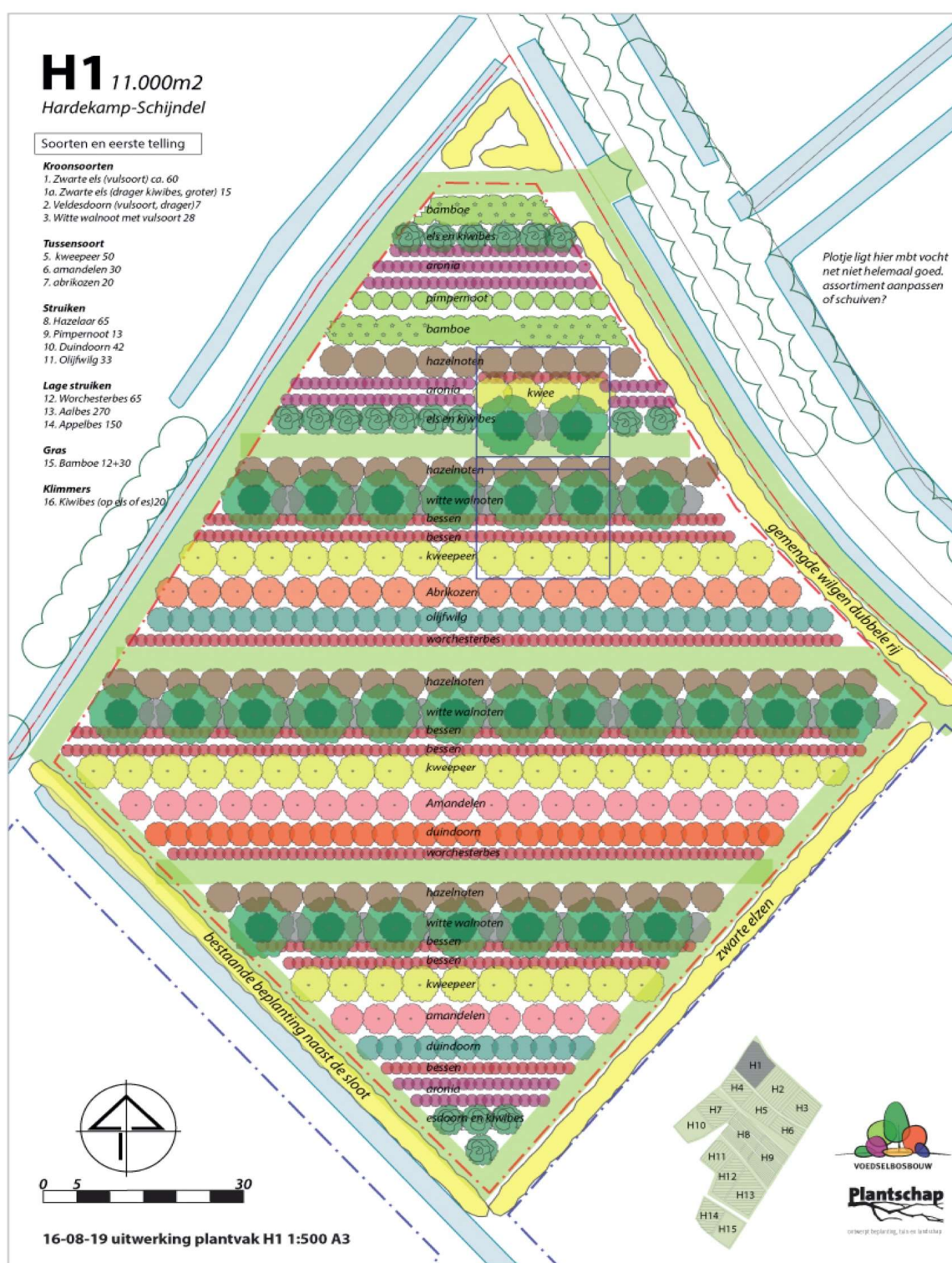
12. Worchesterbes 65
13. Aalbes 270
14. Appelbes 150

Gras

15. Bamboe 12+30

Klimmers

16. Kiwibes (op els of es) 20







"Food in the Anthropocene represents one of the greatest health and environmental challenges of the 21st century"

EAT-Lancet Commission on healthy diets from sustainable food systems

THE LANCET

The best science for better lives

"Plant healthy and sustainable crops. Ensuring that the diets of 10 billion people are both healthy and sustainable will require an increase of the production of fruits, vegetables, legumes and nuts by 9% annually and 50–150% by 2050."



Food Forest Ketelbroek summer 2018



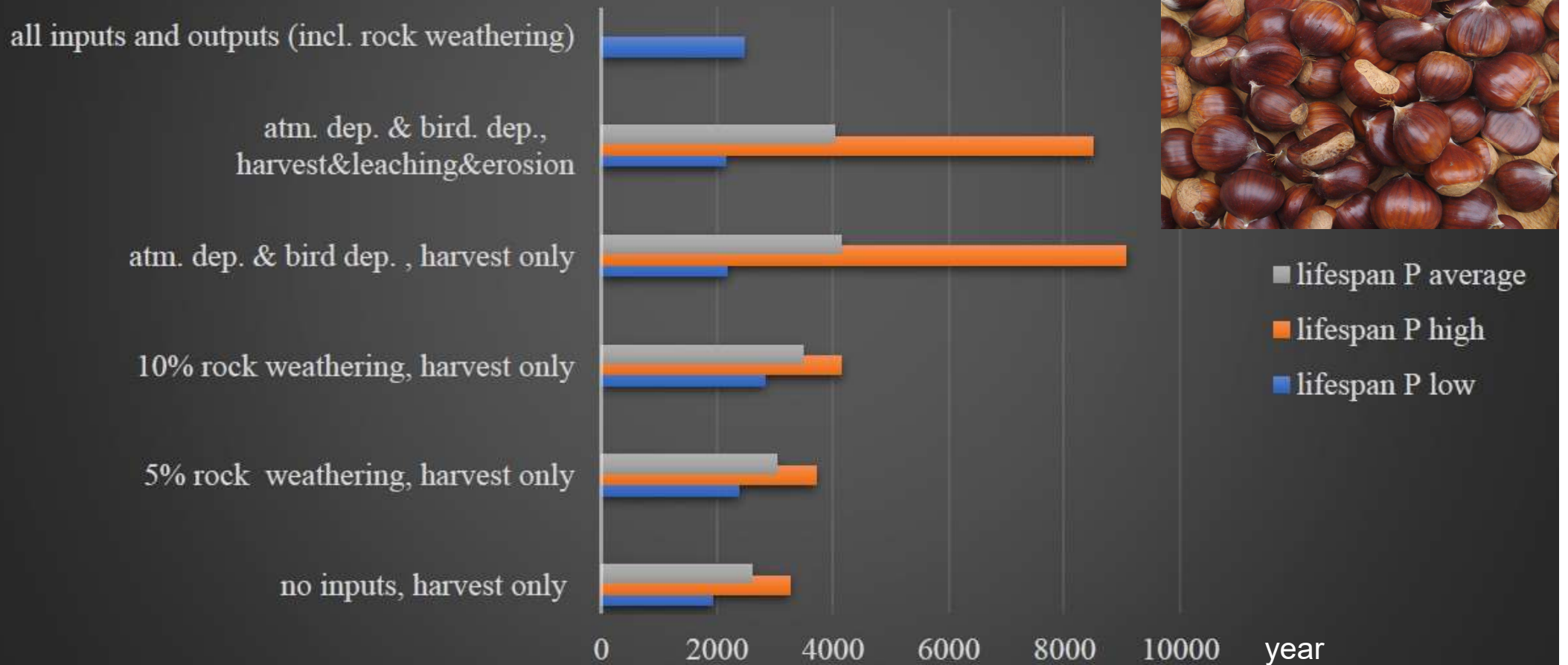
Cherry plum (*Prunus cerasifera*), producing well during very dry and hot summers of 2018 and 2019!

Pepels, Niek.

Do food forests need fertiliser?

Farming Systems Ecology, Wageningen University & Research, 2019

Time until phosphorus stock in 0-2 metres is halved with constant annual P output via chestnut harvest of 2000 kg per ha



LAND USE

WWW.VOEDSELBOSBOUW.ORG



CO₂ Carbon sequestration

Biodiversity

External input

Climate resilience





woutervaneck@voedselbosbouw.org
www.facebook.com/foodforestketelbroek