

The *Bec Hellouin* forest garden case study & The edible forest of *Les Champs l'oeil* farm



by Louise Gehin Perez
February 2021

Short presentation

Part 1 : the Bec Hellouin
forest garden case study

Part 2 : the new
multistrata orchard (Les
Champs l'oeil farm)

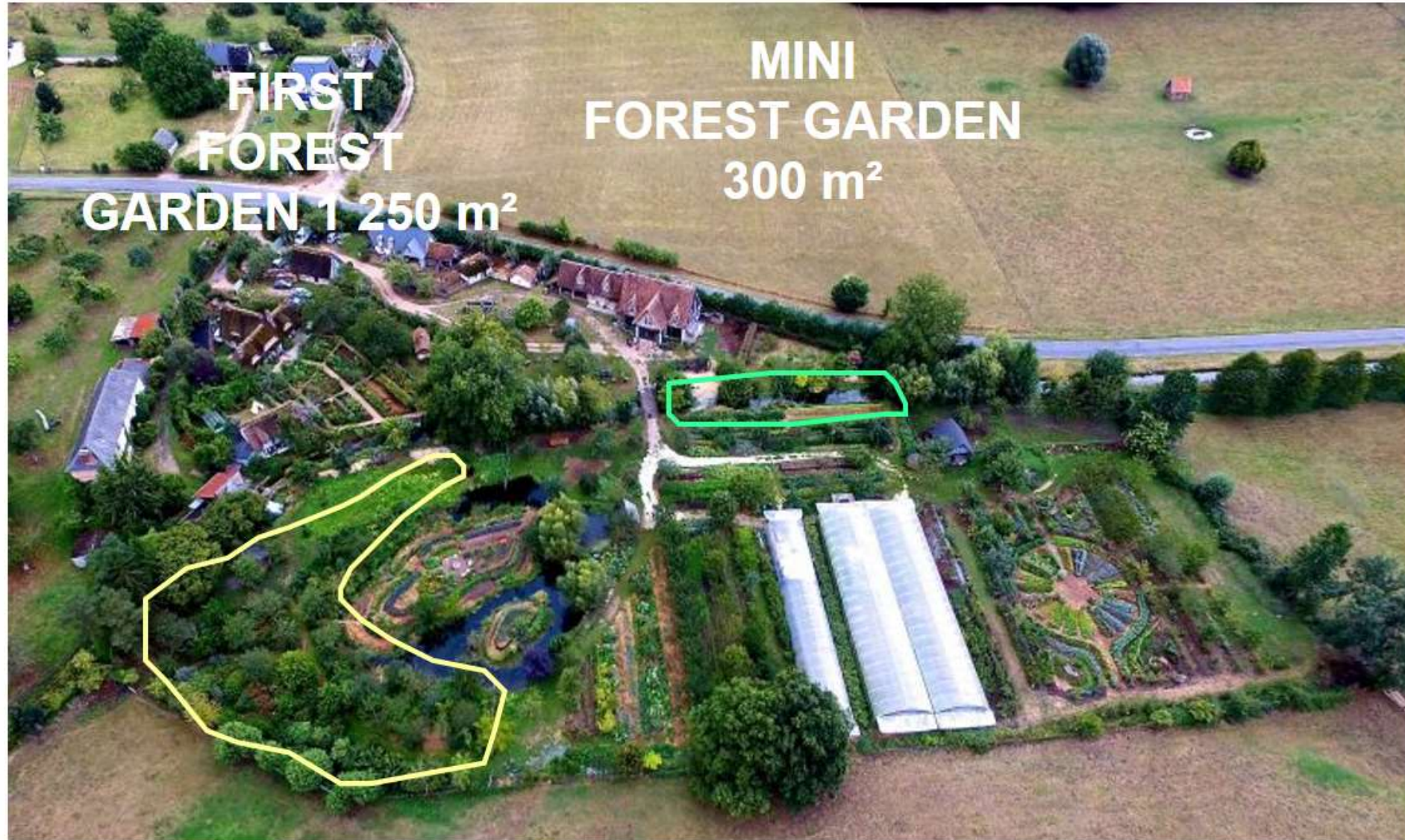


Part 1 - The *Bec Hellouin* garden forest case study



Can we make a living from a forest garden?

The *Bec Hellouin* farm



The mini forest garden key features



Columnar fruit
trees



Berries grafted on
stem



Herbs & compostable mulch
films on ground cover layer

The mini forest garden



Implementation budget

- **Trees:** 4 589 euros
- **Stacking trees:** 1 117 euros
- **Mulch films:** 724 euros

TOTAL value of purchases : 6 430 euros

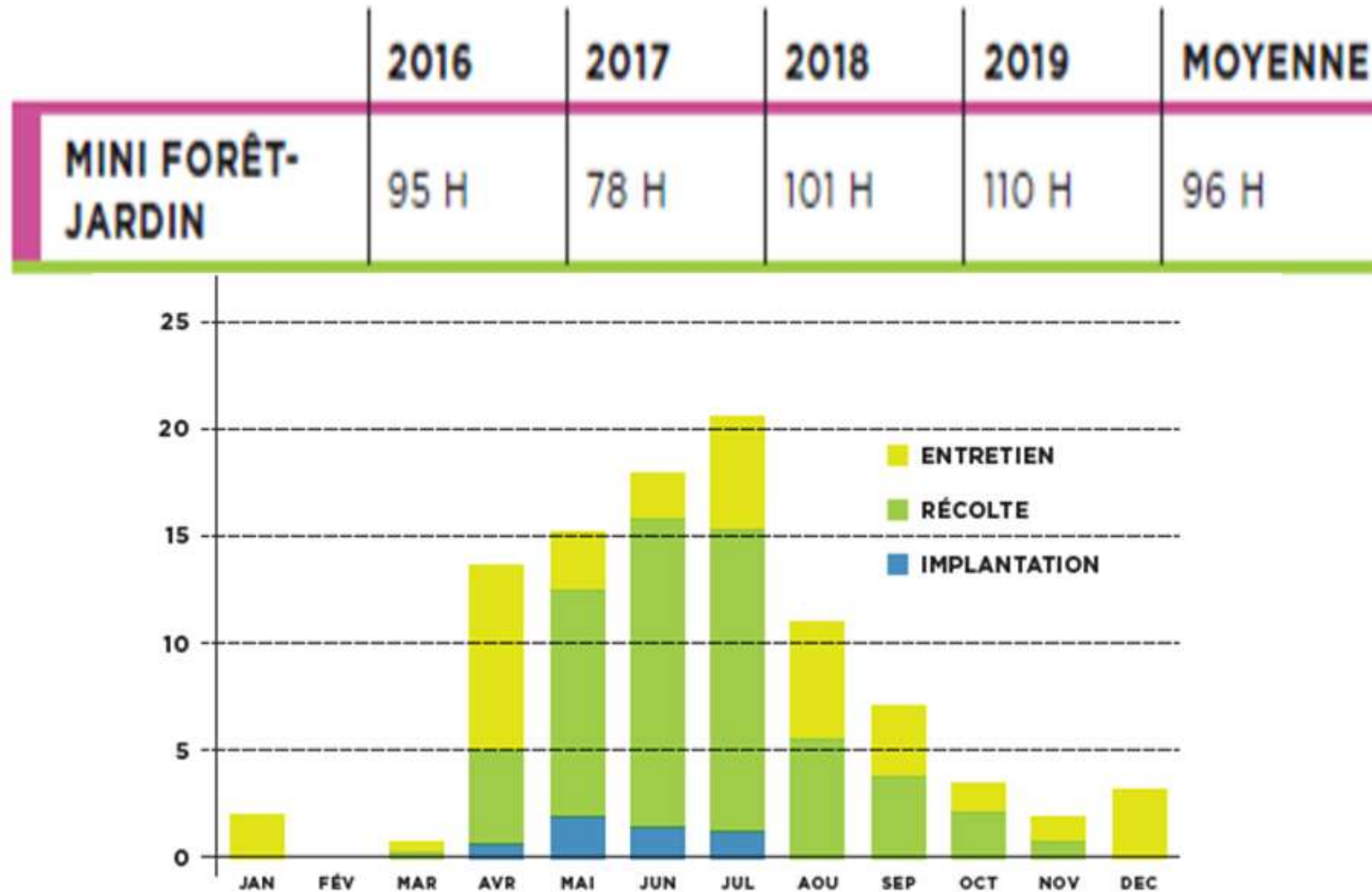
- **Labour cost (not included):** 42 days of 8 hours

Data collection methods

- Working time recording
- Crop yields quantification
- Not included : packing, selling, etc. together with market gardening

First results

Mini forest garden working times - not included:
setting up time



Mini forest garden harvest value - the first 4 years

	2016	2017	2018	2019
MINI FORÊT-JARDIN	3 495 €	2 967 €	5 832 €	4 398 €

	MINI FORÊT-JARDIN	2016	2017	2018	2019
HERBS	PLANTES AROMATIQUES ET MÉDICINALES	88 %	98 %	63 %	82,5 %
BERRIES	PETITS FRUITS	12 %	2 %	37 %	17,5 %

This case study highlights

- The interesting potential of the mini forest garden;
- Its specific context;
- The fact that it can't be extrapolated;
- The need to think through all the stages – from design to maintenance, marketing and all necessary additions.

Source : <https://fermedubec.com/.../les-rapports-scientifiques/>

Part 2 - The edible forest



Les champs l'œil farm, october 2020

4 interconnected activities



Edible forest aerial views



The edible forest, 6 connected spaces

Truffle
orchard

Agroforestry
vineyard

Grazed
orchard

Multi-strata
orchard

Market
garden
orchard

Perennial
garden

Harvest and
tool shed





Multi-strata
orchard

Harvest and
tool shed

The multi-strata orchard

- Semi vigorous rootstock
- 2,5 ha
- 300 fruit, 150 shrubs
- Fruit trees ready to harvest at the same time in a row
- 110 varieties, mainly regional
- Between fruit trees : shrubs or nitrogen fixer berries, aromatic plants



The multi-strata orchard's pattern example



Rhubarb – Mint - Rhubarb – Chive – Comfrey – Absinthe – Blackcurrant - Thyme

The agroforestry vineyard

- 5000 m²
- Mainly ancient varieties and some robust modern varieties
- Every 6 vines, 1 shrub
- Between vines : aromatics
- Green manure crops before planting

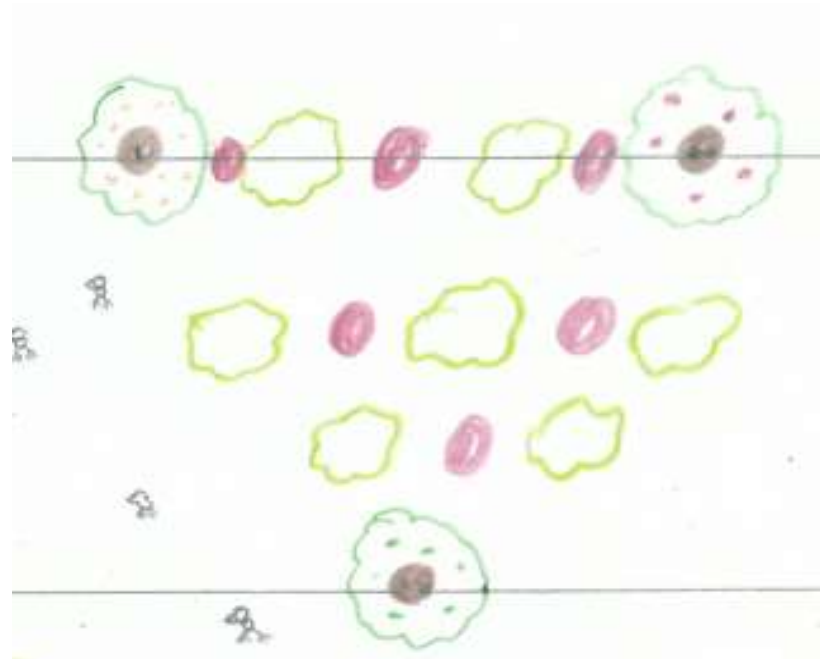
Grazed
orchard



Harvest and
tool shed

The grazed orchard

- 3 hectares
- Non-dwarfing rootstock
- Area by month of harvest
- 10 small copses



Truffle
orchard

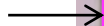


Harvest and
tool shed

The truffle orchard

- 1,2 ha of stony land
- Various fruit trees and truffle trees
- 2 tests :
 - Fruit trees and truffle trees in a same row
 - 1 row of various fruit trees / 1 row of various truffle trees
- Very experimental, no hindsight

Market
garden
orchard



Harvest and
tool shed



The market garden orchard

- 1 hectare
- Organic shape
- Various local and exotic fruit trees
- Vegetable at the beginning
- Wild area, with a pond





Perennial
garden

Harvest and
tool shed

The perennial garden

- 2000 m²
- Perennial vegetables, aromatics and strawberry
- Complete the market garden, at the start of the season

Hedges and small copses



Interconnected spaces



Pastured poultry



Chickens in the multi-strata orchard



Water, before ...



Water, now



Orchard care

- Covered soil
- Fermented extracts
- Grazed by chickens
- Research for suitable tools



First fermented extracts spraying

Acknowledgments

- Thanks to families and friends who support us and help us to build this farm full of life!
- Thanks to Martin for his trust and sharing
- Thanks to Cassandre for his drawing full of life
- Thanks to Marc for his careful orchard map
- Thanks to Jean-Pierre for his careful translation
- Thanks to the Bec farm and the Sylva Institute
- Thanks to Arbres d'Avenir & CDC, to Department 24 and to the Nouvelle-Aquitaine Region for their financial support