



NATIONAL FOREST GARDENING SCHEME

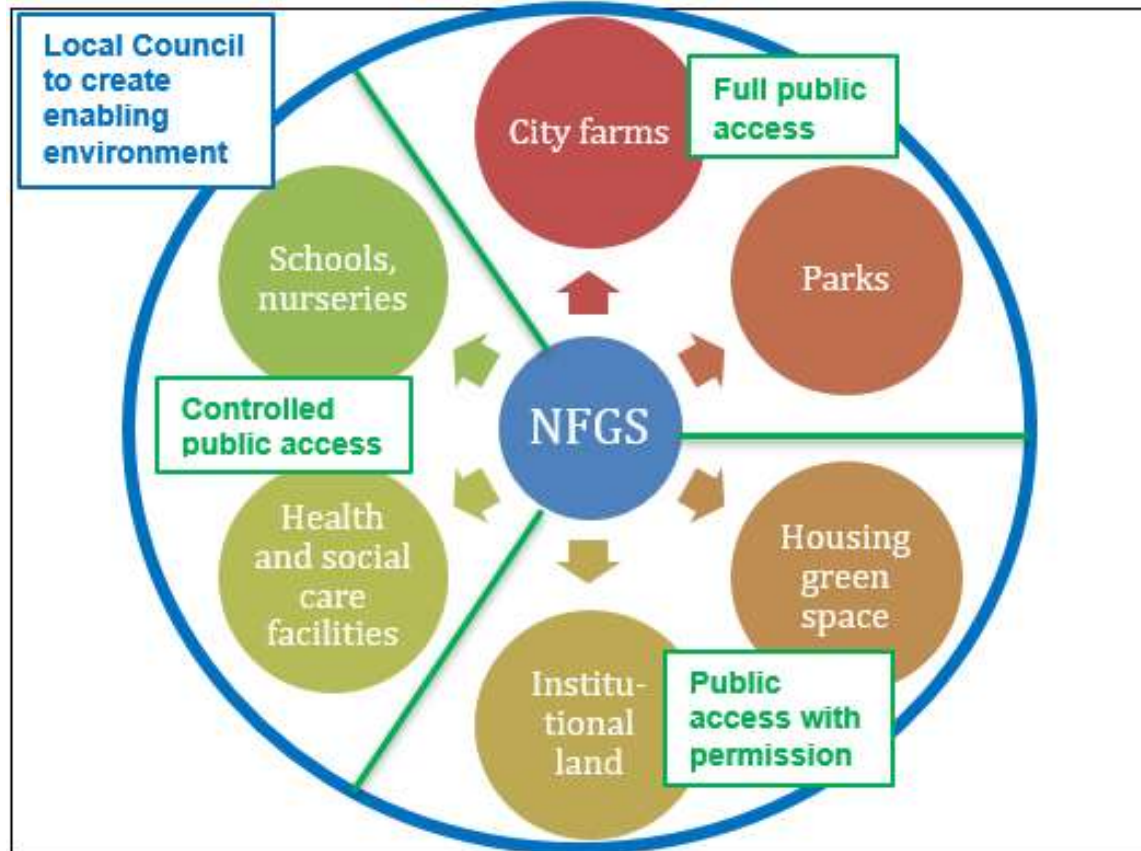
PAUL PIVCEVIC
FOUNDER AND DIRECTOR



NATIONAL FOREST GARDENING SCHEME

- First gathering December 2016
- Focused on forest gardens in publicly accessible spaces
- 150 + members
- Incorporated as a community interest company 2019

NFGS - WHERE - to support community forest gardening



Common land/ ownership types categorised by degree of access

Each type has its own set of opportunities and challenges

The NFGS seeks to bring its members expertise to support development of FG in these spaces



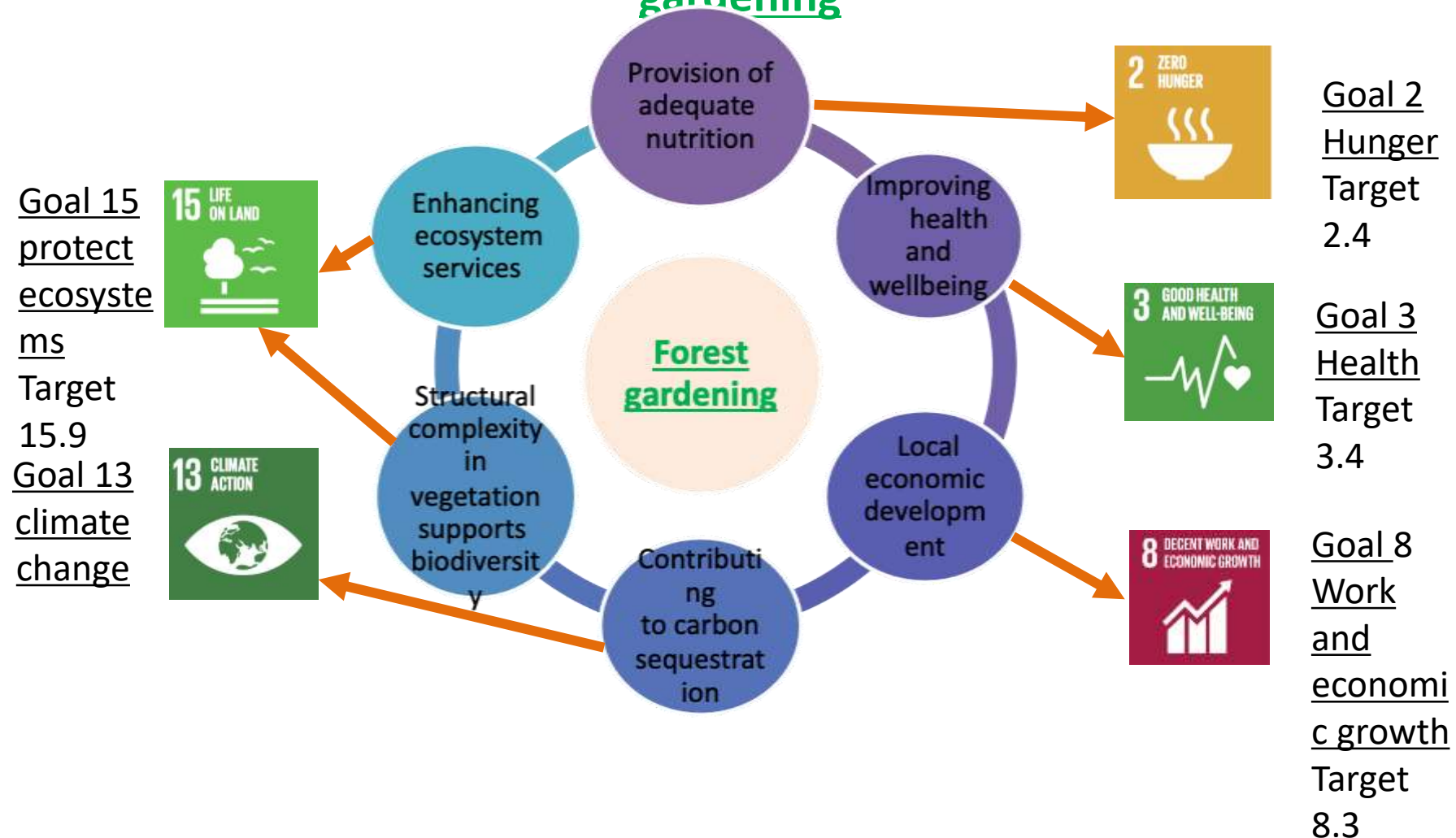








NFGS - WHAT - climate resilience through community forest gardening





PRINCIPLES FOR PUBLIC AND COMMUNITY SPACES

1. Think 'diversity'

- > Biodiversity
- > Structural diversity
- > Functional diversity
- > Diversity of location
- > Diversity in design

2. Observe and interact

3. Use minimum effort

4. Use resources responsibly and efficiently

5. Decide your group structure together

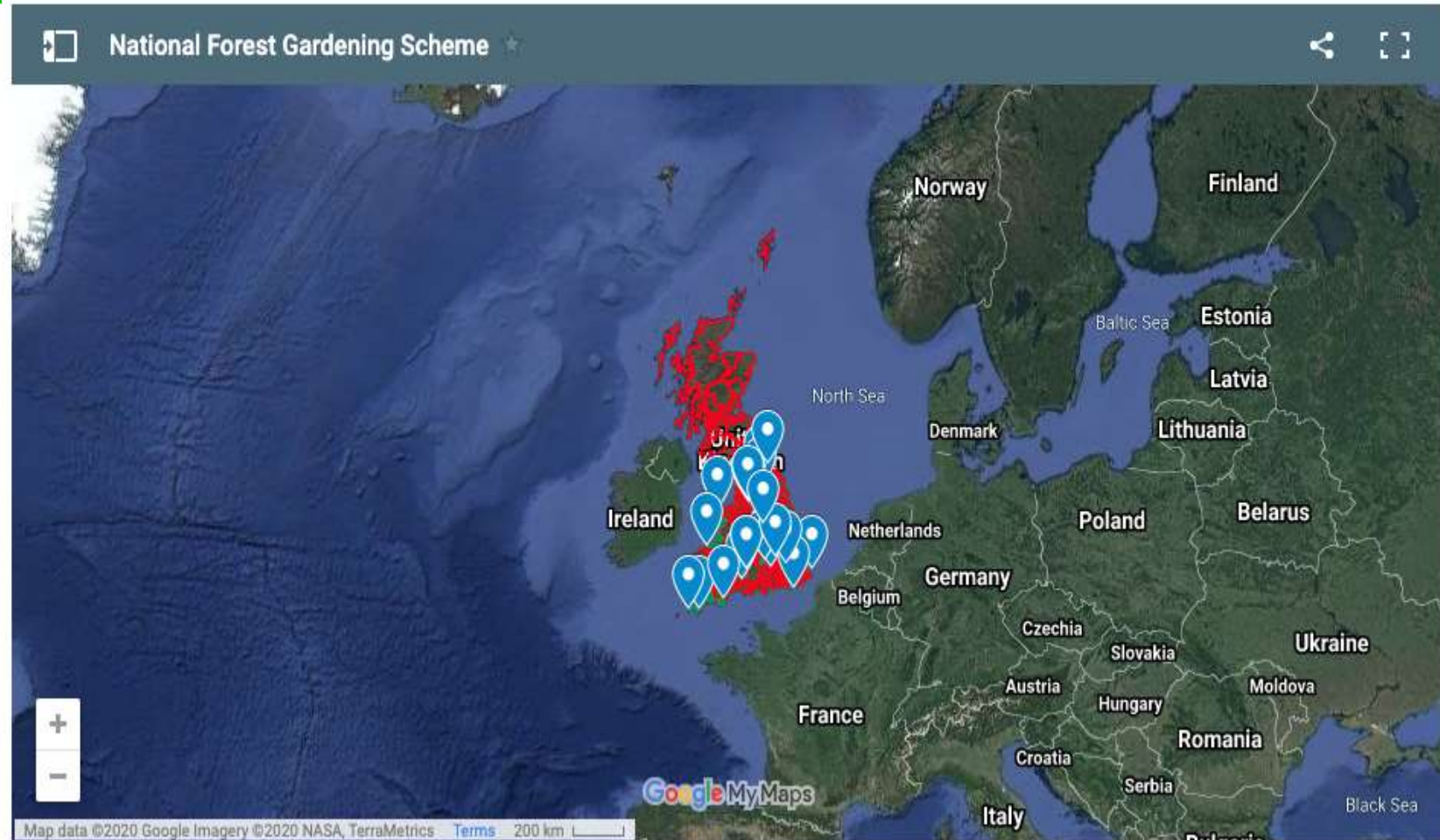
6. Look beyond the edge

7. Learn and celebrate





Find your nearest community forest garden:





NATIONAL FOREST GARDENING SCHEME

- Forest Gardening Supplementary Planning Document (SPD)

'Three Words'

What Architecture
means to Nottingham

Volume 1





NATIONAL FOREST GARDENING SCHEME

- Directory of Forest Garden Practitioners
- Member offers: courses
- Books, videos, research articles

[HOME](#)[LATEST ▾](#)[FOREST GARDENING ▾](#)[KEY BENEFITS ▾](#)[RESOURCES ▾](#)[ABOUT US ▾](#)[CONTACT](#)[FORUM](#)

NATIONAL FOREST GARDENING SCHEME

[Donate](#)[JOIN US!](#)[COMING SOON: WINTER SEMINAR SERIES](#)



Home



Explore



Notifications



Messages



Bookmarks



Lists



Profile



More

Tweet



National Forest Gar...
@NatForestGarden



National Forest Gardening Scheme

302 Tweets



Edit profile

National Forest Gardening Scheme

@NatForestGarden

Our aim is to bring us individually, and in our communities to a new level of harmony and well being through planting, eating from, and enjoying Forest Gardens.

nationalforestgardening.org Born 21 October 1997

Joined October 2017

573 Following 580 Followers

Tweets

Tweets & replies

Media

Likes



You Retweeted



ReForest @ReForest_Earth · 16 Dec



An exciting new initiative taking shape Rimon Farm. An [#ecological](#) agricultural [#farm](#) and [#animalsanctuary](#) where [#atriskyouth](#) and [#peoplewithdisabilities](#) are supported

The logo features a central text area surrounded by a pattern of stylized green leaves and yellow-orange fruit (pears and apples) on a light cream background. The text is in a bold, green, distressed font.

FOREST GARDEN

ABUNDANCE IN A BOX

HANDLE WITH CARE - LIVELY PLANTS INSIDE!

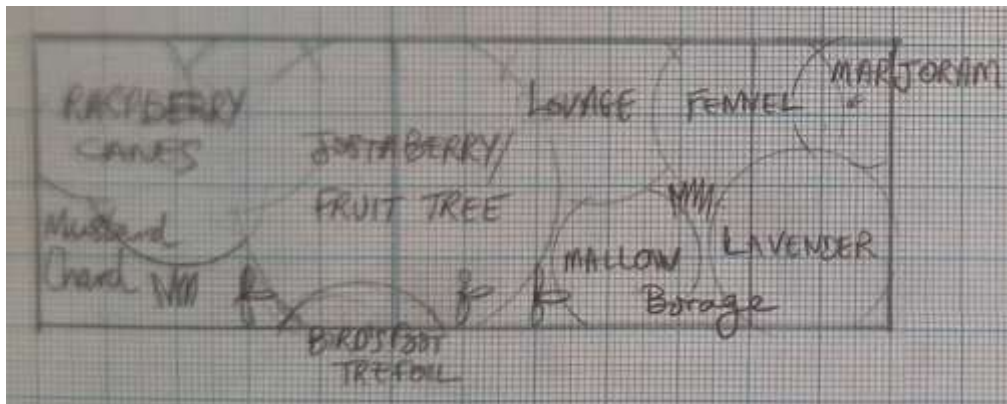
THE INITIAL CONCEPT



DESIGNS FOR DIFFERENT SIZED PLOTS - ONLINE



Herbaceous
retrofit



Balcony or garden container



3 x 3m plot

Two Forest Gardening Seminar Series



Forest Gardening for Well-Being: Mind, Body and Ecology Coming Together

- Seminar 1 (20th January): Green Social Prescribing and Forest Gardens
- Seminar 2 (27th January): Healthy' health environments: using land in healthcare facilities for forest gardens and well-being.
- Seminar 3 (3rd February): Designing and Delivering Forest Gardens for Well-Being
- Seminar 4 (10th February): Open discussion building on themes drawn out from previous seminars.
- Seminars are free and will be 19.30-21.00 on the indicated dates. We would be delighted if you were able to join us.



POTENTIAL OF THIS MOVEMENT

- **Relational, co-creative** nature of these gardens - redefines the place of the gardener/volunteer
- **Research** that shows a wellbeing gain through engaging in this way
- **Community resilience**
- The **popularising** of more resilient perennial plants - contributing to food resilience
- Encouraging **commercial market gardening** of perennial plants
- Therefore strengthening **local food economies**
- Framing forest gardening as bringing **nature-based solutions** to your own community and back gardens
- Positioning community forest gardening as **repairing and enhancing soils** – direct link to changes in farming practices

