



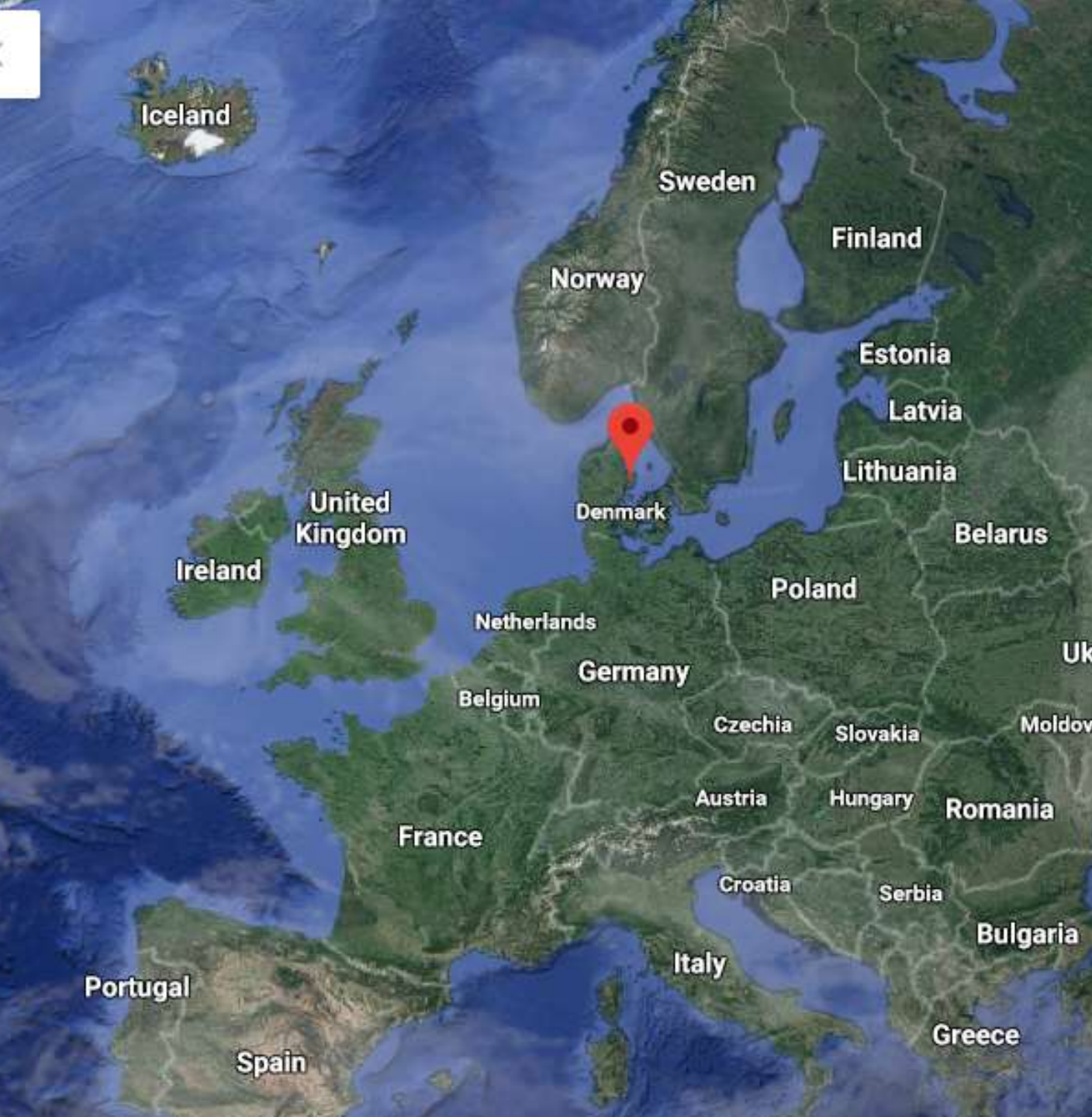
Permakulturhaven
myrrhis

Myrrhis Forest Garden & Agroforestry

Friland, Denmark

Tycho Holcomb & Karoline Nolsø Aaen

Permakulturhaven.dk

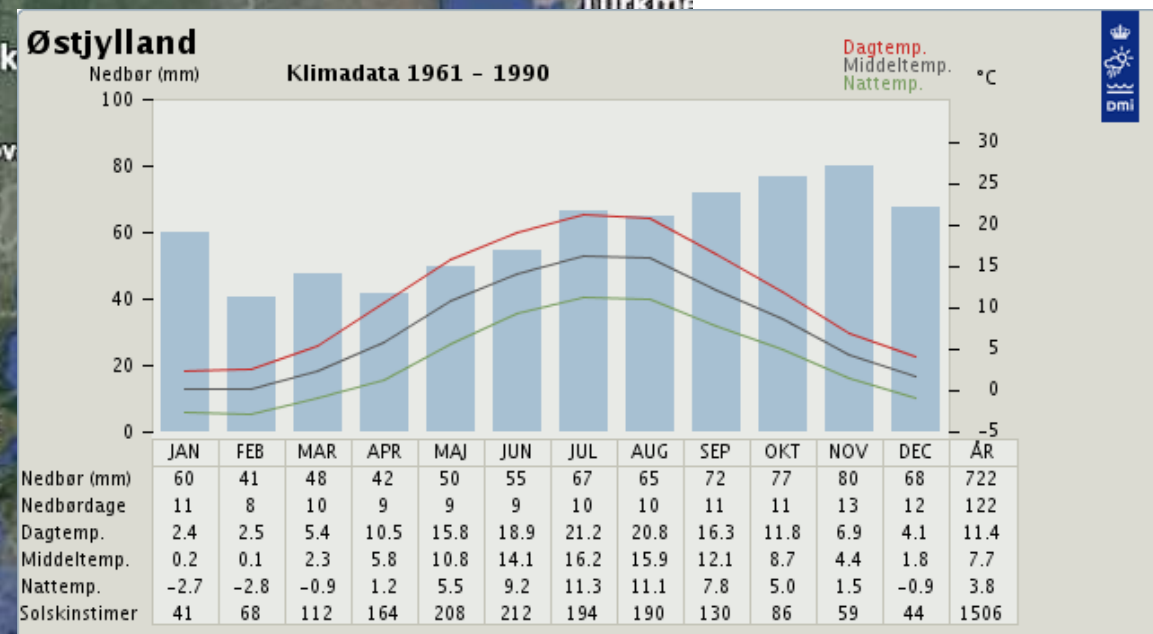


Denmark 56 °N

Year average temp: 8.9°C = 48 F

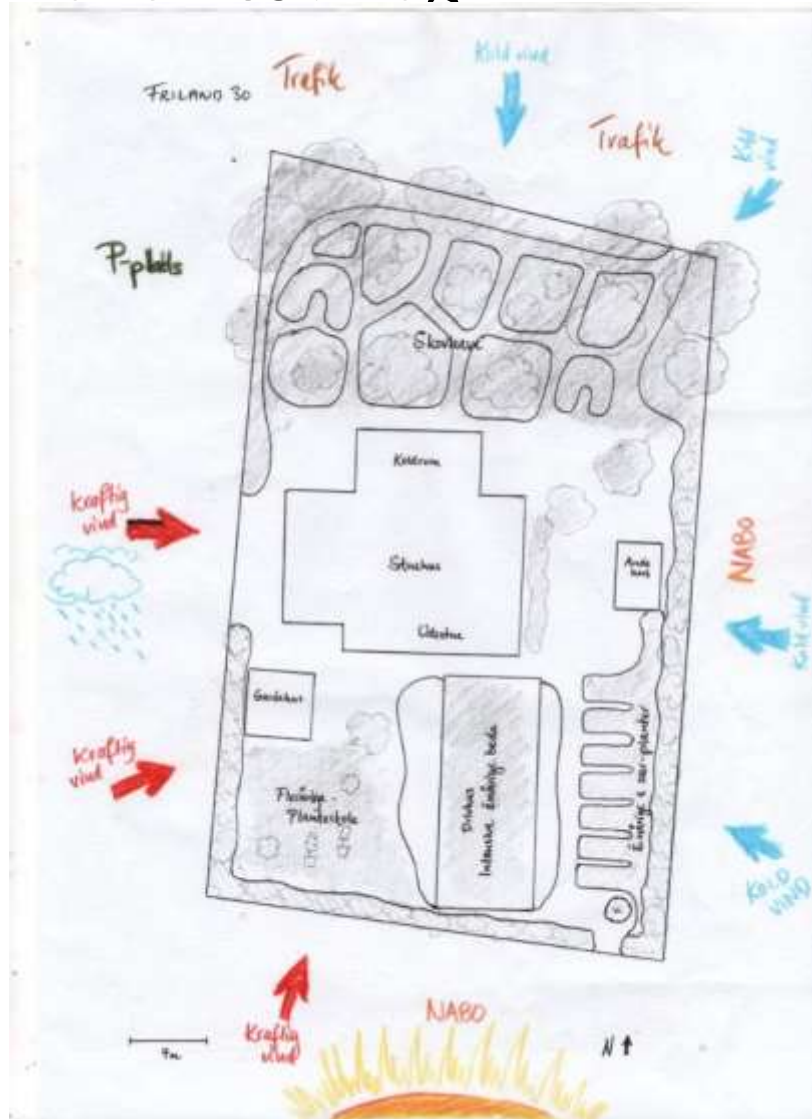
- January average: 1.4°C = 34.5 F
- July average: 17.4°C = 63 F

Annual precipitation: 750 mm = 30 in



Design phase

- 2012 Friland ecovillage





Permakulturhaven myrrhis

- 920 m² = a little under ¼ acre
- Off-grid strawbale house
- Coldroom
- Roof garden
- Conservatory
- Hoophouse
- No-dig kitchen garden
- Forest garden
- Integrated animals
- Plant nursery
- Edible watergarden
- Fruiting hedges



Simultaneous establishment – house & forest garden 2012



Myrrhis Forest Garden

- 300 m²
- App. 200 different species of perennial vegetables
- Variety of ground covers
- Berry bushes
- Alders as N-fixers & for climbers
- Paths with organic cover (wood chips/straw)
- Fruit trees (Quince, Persimmon (hybrid), Plum, Apple, Cornelian cherry, Cherry)
- Nut trees in hedge on North edge (Walnut, Chestnut, Turkish hazel)



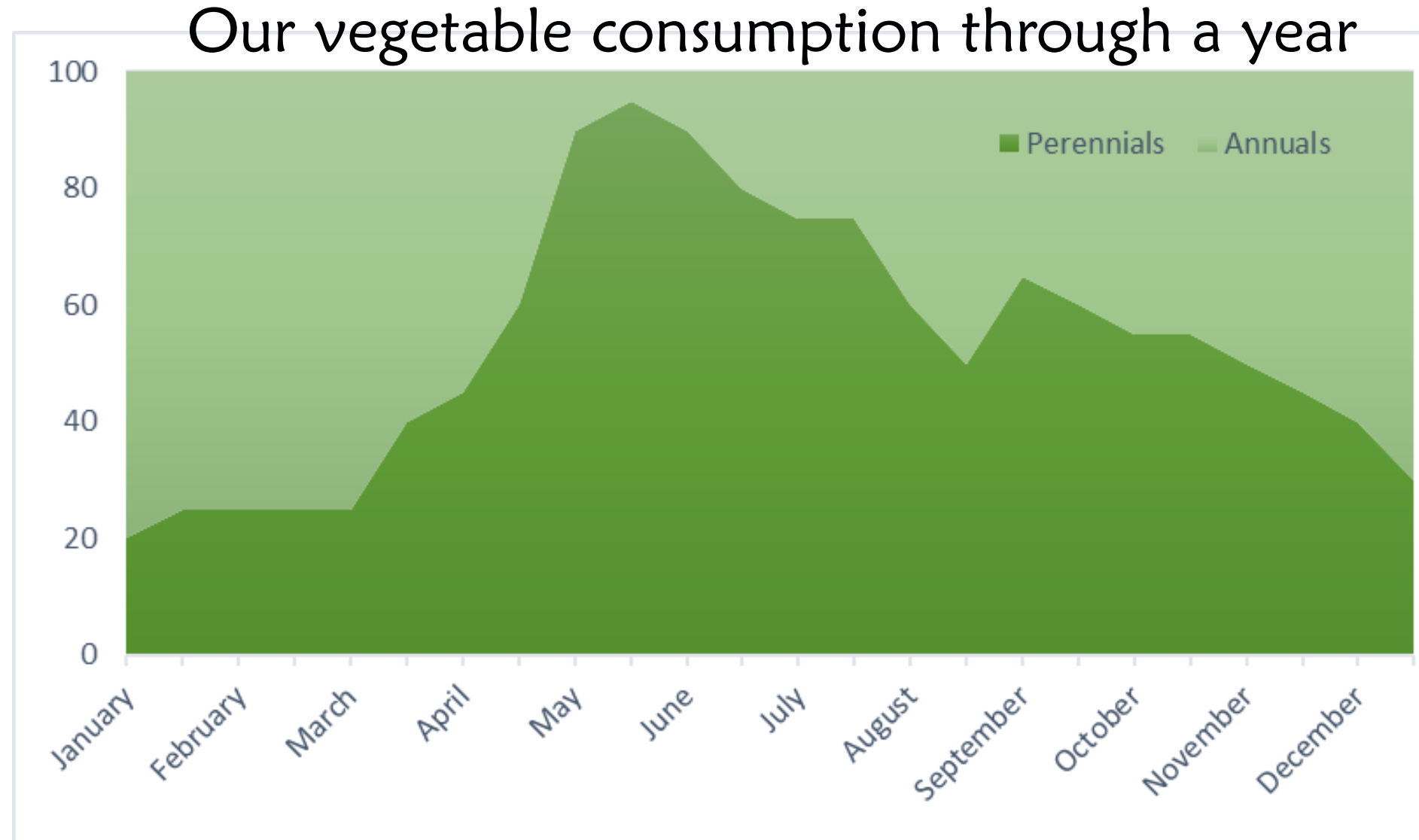






Main focus: Perennial vegetables

- How they complement the diet.
- Best adapted species to our climate.
- Growing, cooking, selecting.
- Plant nursery with focus on perennial vegetables, on-site sale.



Myrrhis Agroforestry

4 ha. started in 2017

***Fruit and Nut Orchard,
alleycropped market garden,
pastured rabbits & geese,
pastured egg-layers,
edible perennial nursery***

Our Vision:

- Education and demonstration site for permaculture and small-scale agroforestry
- Experimentation with agroecological practices
- Breeding and development of new well-adapted fruit, nut, and perennial vegetable varieties
- Food production for the local community



*From producing for ourselves,
to producing for our local
community*

Alley-cropping: No-till market garden (1000m²), U-pick CSA, specialty & perennial vegetables for local restaurant.

Rows of fruit trees and berries with perennial vegetables (linear forest garden).

Distance between tree-rows: 14 m.



Integrated Animals: Pastured Meat Rabbits & Pastured Egg-layers



Working With Landscape Succession

Expected Crop Succession

Fruit Alleys

Year

1 - 50	Annual vegetables
1 - 50	Poultry (hens, ducks)
3 - 20+	Perennial vegetables
3 - 50+	Berries
5 - 50+	Geese
5 - 50+	Fruit

Nut Alleys

Year

1 - 8	Annual vegetables
1 - 15	Grazing rabbits
1 - 20	Plant nursery
1 - 50+	Poultry (hens, ducks)
5 - 20	Geese
20 - 50+	Shade tolerant perennial vegetables
15 - 100+	Nuts



Thanks 😊

Permakulturhaven
MYRRHIS
Regenerative Agriculture,
Permaculture & Edible Ecosystems
Tycho Holcomb & Karoline Nolsø Aaen



Permakulturhaven.dk